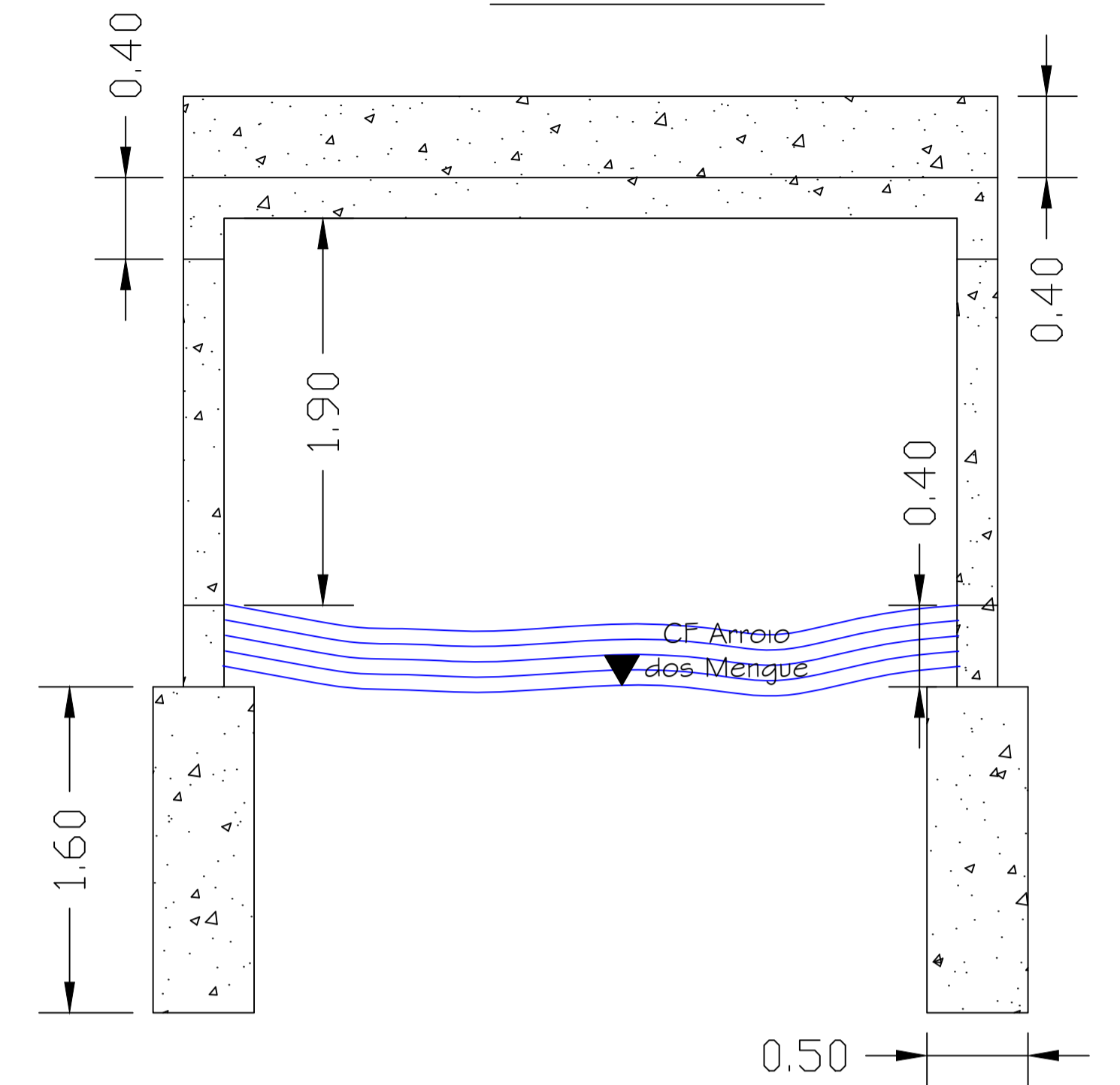


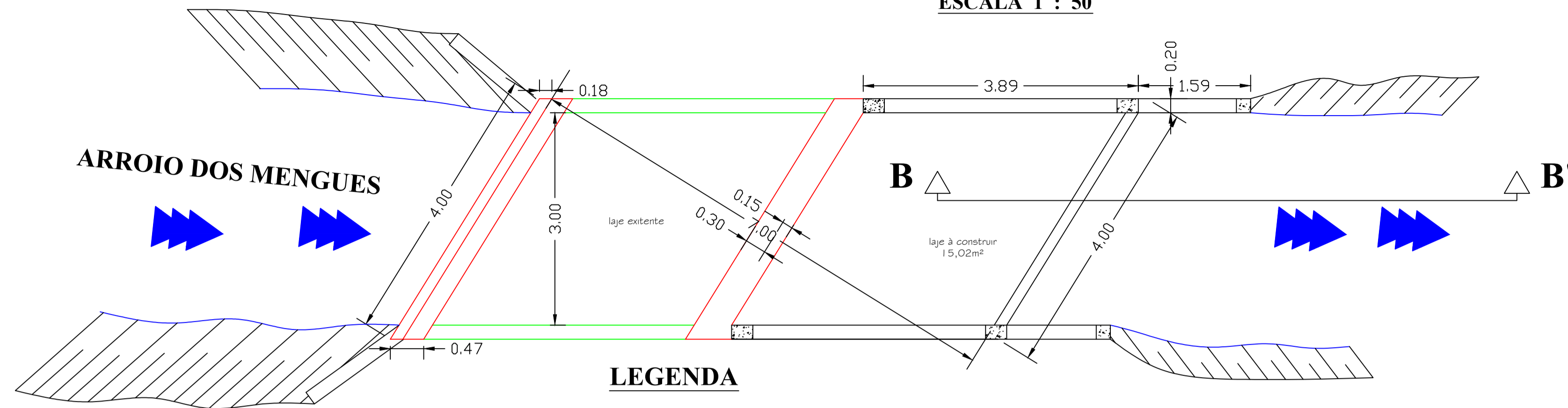
# VISTA LATERAL CABECEIRA

ESCALA 1 : 50



# PLANTA BAIXA

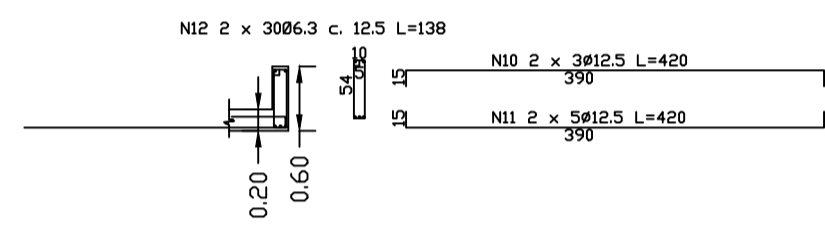
ESCALA 1 : 50



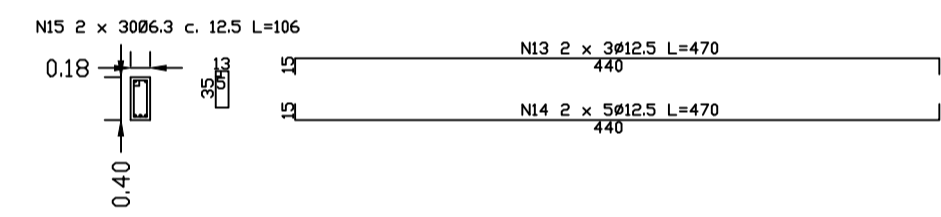
## LEGENDA

- EXISTENTE
- À CONSTRUIR
- À RECONSTRUIR
- À DEMOLIR

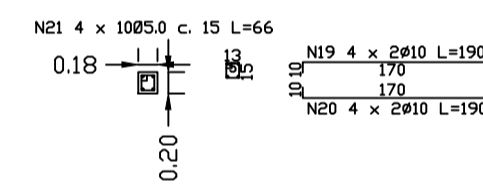
## VIGA LONGITUDINAL (2 X)



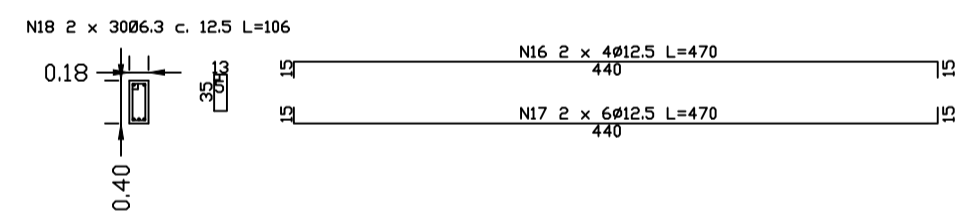
## VIGA TRANSVERSAL SUPERIOR (2 X)



## VIGAS TRANSVERSAIS ALAS (4 X)



## VIGA TRANSVERSAL FUNDAÇÃO (2 X)



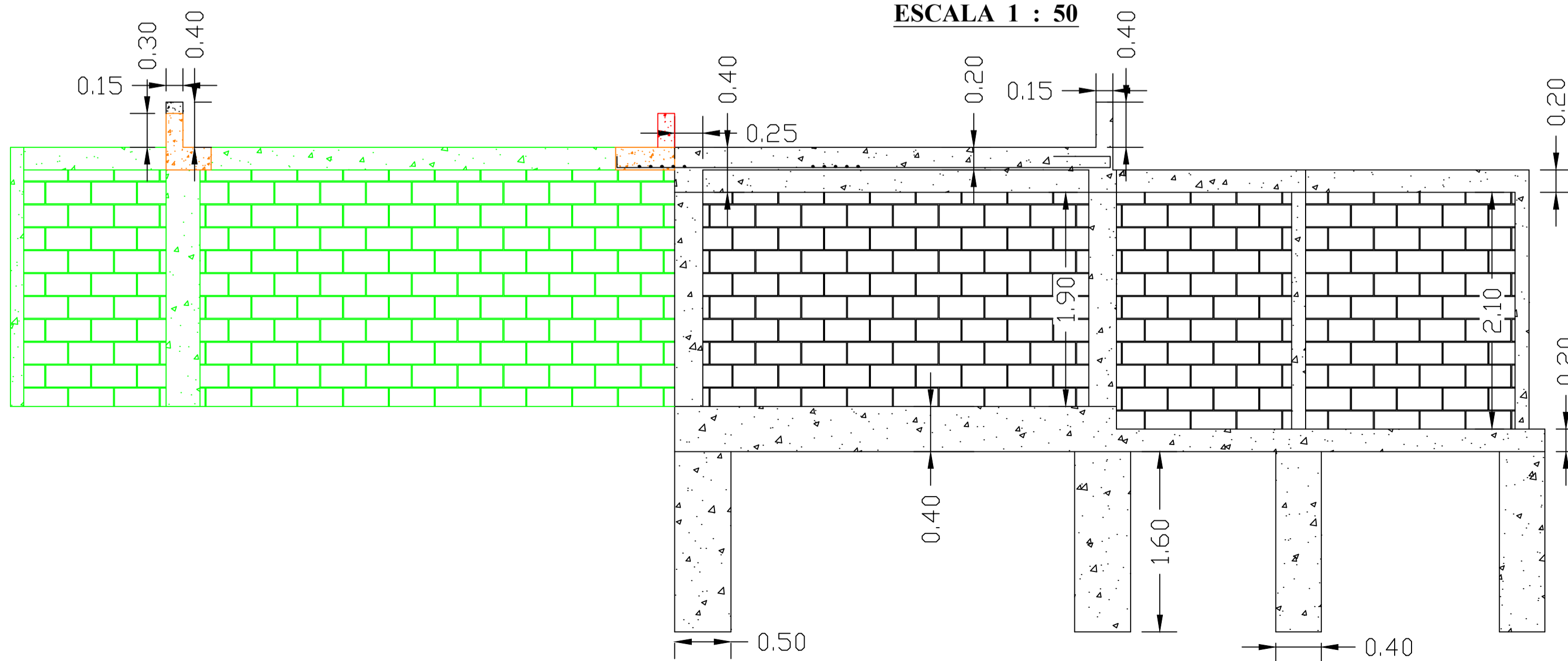
## QUANTIDADES

CONCRETO 35.0 Mpa 6,12m³  
 ÁREA DE FORMAS 40,99m²  
 ALVENARIA EM PEDRA GRÉS 18,34m³

TIPO	Ø	Qdade(m)-10%	Peso (kg/m)	Peso Total (kg)
App CA 10	5.0	115,72m	0,154	17,82
App CA 10B	6.3	231,00m	0,245	46,80
App CA 10B	8.0	-	0,385	-
App CA 10B	10.0	251,24m	0,817	195,82
App CA 10B	12.5	302,65m	0,963	290,90
App CA 10B	16.0	28,05m	1,578	44,26
Total Peso Ferragem				824,60

## CORTE LOGITUDINAL BB'

ESCALA 1 : 50



## QUADRO DE FERROS

Item	Local	Pos.	Ø	Qdade.	Comptº Unit	Comptº Total
01.	Fundação/Pilares	N01	12,5	24	4,35	104,40
		N02	10,0	08	4,35	34,80
		N03	5,0	40	0,86	34,40
		N04	5,0	20	0,66	13,20
		N05	5,0	24	0,95	22,80
		N06	5,0	12	0,70	08,40
02.	Laje Superestrutura	N07	10,0	32	5,10	163,20
		N08	12,5	37	5,10	188,70
		N09	16,0	05	5,10	25,50
03.	Viga Longitudinal	N10	12,5	06	4,20	25,20
		N11	12,5	10	4,20	42,00
		N12	6,3	60	1,38	82,80
04.	Viga Transv. Sup.	N13	12,5	06	4,70	28,20
		N14	12,5	10	4,70	47,00
		N15	6,3	60	1,06	63,60
05.	Viga Trans. Fund.	N16	12,5	08	4,70	37,60
		N17	12,5	12	4,70	56,40
		N18	6,3	60	1,06	63,60
06.	Viga Alas Sup. e Inf.	N19	10,0	08	1,90	15,20
		N20	10,0	08	1,90	15,20
		N21	5,0	40	0,66	26,40

PROJETO MOBILIDADE URBANA  
 PREFEITURA MUNICIPAL DOM PEDRO DE ALCÂNTARA

PROJETO AMPLIAÇÃO (ALARGAMENTO)  
 PONTE DE CONCRETO ARROIO DOS MENGUES

ESCALA  
 1 : 50  
 INDICADA

PROPRIETÁRIO: \_\_\_\_\_  
 RESP. TÉCNICO: \_\_\_\_\_  
 ENGº PAULO JESUS PORTO CORRÊA CREA RS031799

PLANTA BAIXA / CORTES / PLANTA FERRANGENS  
 ESTRUTURA DE CONCRETO E FORMAS

ÁREA: 15,02m² APRESENTAÇÃO: 21/02/2024 APROVAÇÃO: \_\_\_\_\_/\_\_\_\_\_/2024 PRANCHA 01/01